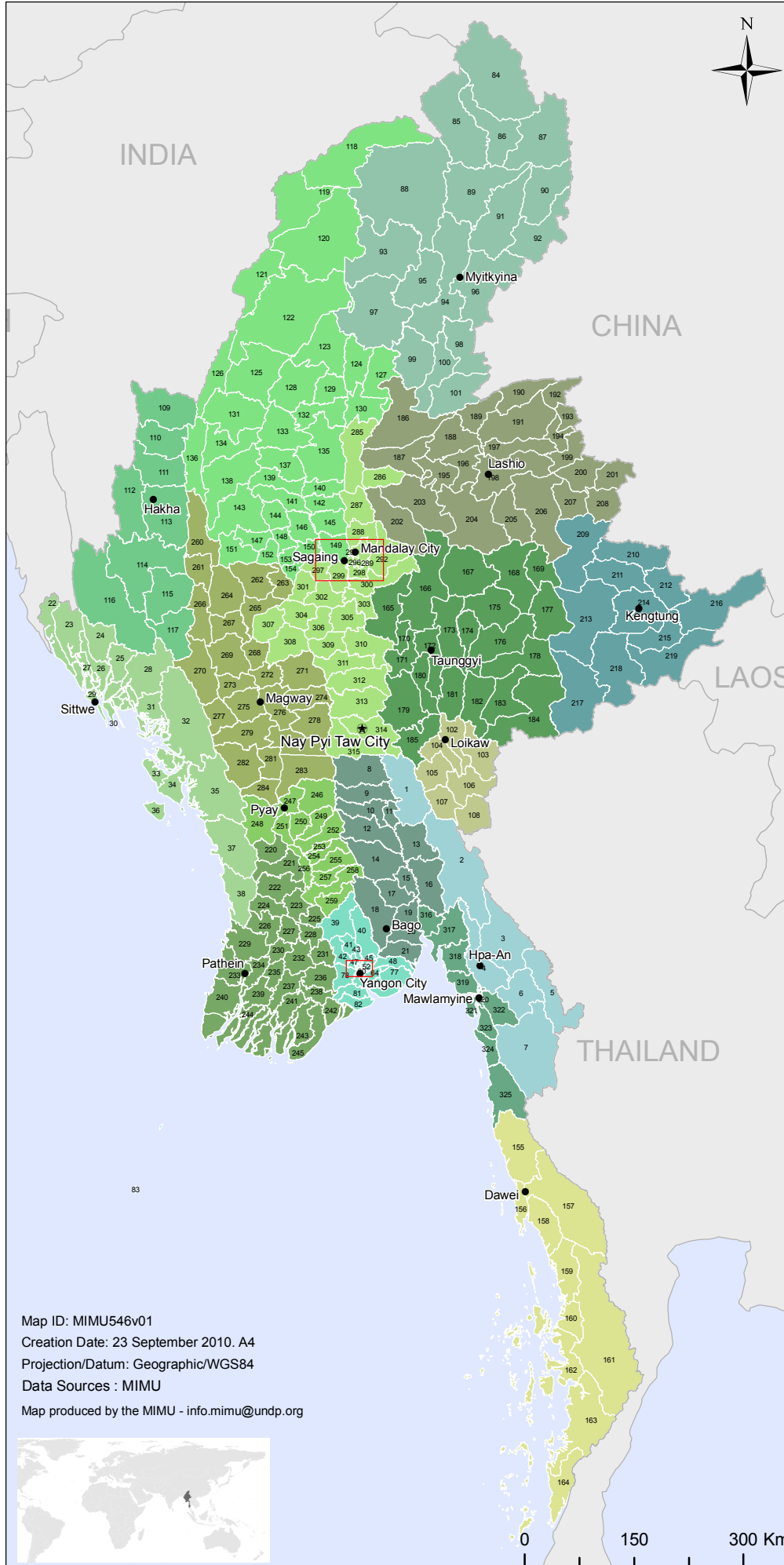


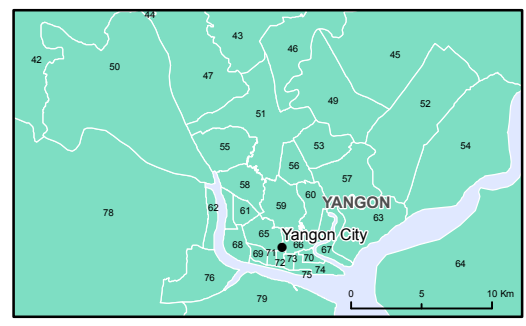
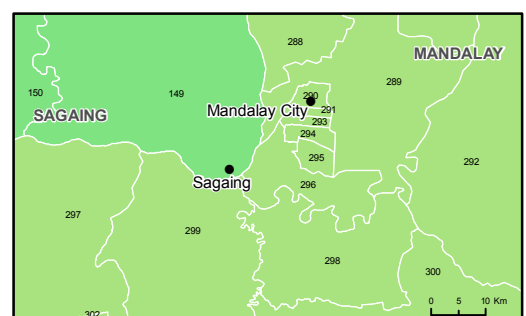


Myanmar States/Divisions and Townships

Overview Map



Kavin State 1 Thandaunggyi 2 Hpapun 3 Hlaingbwe 4 Hpa-An 5 Myawaddy 6 Kawkaeik 7 Kyainseikgyi Bago East Division 8 Yedashe 9 Taungoo 10 Oktwin 11 Htantabin 12 Phyu 13 Kyaukkyi 14 Kyauktaga 15 Nyunglebin 16 Shwegyin 17 Daik-U 18 Bago 19 Waw 20 Thanatpin 21 Kawa Rakhine State 22 Maungdaw 23 Buthidaung 24 Kyauktaw 25 Mrauk-U 26 Ponnagyun 27 Rathedaung 28 Minbya 29 Sittwe 30 Pauktaw 31 Myebon 32 Ann 33 Kyaukpyu 34 Ramree 35 Toungup 36 Munaung 37 Thandwe 38 Gwa Yangon Division 39 Talkyi 40 Hlegu 41 Hmawbi 42 Htantabin 43 Mingaladon 44 Shwepyithar 45 Dagon Myothit (East) 46 North Okkalapa 47 Insein 48 Kayan 49 Dagon Myothit (North) 50 Hlaingtharya 51 Ma-4e 52 Dagon Myothit (South) 53 South Okkalapa 54 Dagon Myothit (Seikkan) 55 Hlaing 56 Yankin 57 Thingangyun 58 Khamryut 59 Bahan 60 Tamwe 61 Sanchaung 62 Kyeemyindaing 63 Thaketa 64 Thanlyin 65 Dagon 66 Mingalartaungnyunt 67 Dawbon 68 Ahlone 69 Lanmadaw 70 Pazundaung 71 Latha 72 Pabedan 73 Kyauktada 74 Botahtaung 75 Seikkan 76 Seikyikanaungto 77 Thongwa 78 Twantay 79 Dala 80 Kyauktan 81 Kawhmu 82 Kung4 83 Cocokyun	Kachin State 84 Nawngmun 85 Puta-O 86 Machanbaw 87 Khaunglanphu 88 Tana 89 Sumparabum 90 Tsawak 91 Injangyang 92 Chipwi 93 Hpakan 94 Myitkyina 95 Mogaung 96 Waingmaw 97 Mohryin 98 Momaik 99 Shwegu 100 Bhamo 101 Mansi Kayah State 102 Loikaw 103 Shadaw 104 Demoso 105 Hpruso 106 Bawlake 107 Hpasawng 108 Mese Chin State 109 Tonzang 110 Tiddim 111 Falam 112 Htantlang 113 Hakha 114 Madupi 115 Mindat 116 Paletaw 117 Kanpetlet Sagaing Division 118 Nanyun 119 Laha 120 Hkamti 121 Lay Shi 122 Homalin 123 Banmauk 124 Indaw 125 Paungbyin 126 Tamu 127 Katha 128 Pinlebu 129 Wurtho 130 Tiyaying 131 Mawlaik 132 Kawlin 133 Kyunhla 134 Kalewa 135 Kanbalu 136 Kale 137 Taze 138 Mingin 139 Ye-U 140 Khin-U 141 Tabayin 142 Shwebo 143 Kani 144 Budalin 145 Wetlet 146 Ayadaw 147 Yinnabin 148 Monywa 149 8 150 Myinmu 151 Pale 152 Salingyi 153 Chaung-U 154 Myaung Tanintharyi Division 155 Yebu 156 Launglon 157 Dawei 158 Thayetchaung 159 Palaw 160 Myeik 161 Kyusu 162 Bokpyin 164 Kawthoung	Shan (South) State 165 Ywangan 166 Lawksawk 167 Mongkaung 168 Kyethi 169 Monghsu 170 Pindaya 171 Kalaw 172 Taunggyi 173 Hopong 174 Loilen 175 Laihka 176 Nansang 177 Kunhing 178 Mongnai 179 Pinlaung 180 Nyaungshwe 181 Hahsang 182 Mawmai 183 Langkho 184 Mongpan 185 Pekon Shan (North) State 186 Mabein 187 Mongmit 188 Manton 189 Namhkan 190 Muse 191 Kutkai 192 Konkyan 193 Laukaing 194 Kunlong 195 Namhsan 196 Namtu 197 Hseni 198 Lashio 199 Hopang 200 Mongmao 201 Pangwau 202 Naungghio 203 Kyaukme 204 Hsipaw 205 Mongyai 206 Tangyan 207 Pangsang 208 Namphan Shan (East) State 209 Matman 210 Mongyang 211 Mongkhet 212 Mongla 213 Mongping 214 Kengtung 215 Mongpyak 216 Mongyang 217 Mongton 218 Monghsat 219 Tachileik Avaerwady Division 220 Kyangon 221 Myanaung 222 Inga 223 Hinhada 224 Lemyethna 225 Zalun 226 Yegyi 227 Kyonpyaw 228 Danubyu 229 Thabaung 230 Kyaunggon 231 Nyaungdon 232 Pantanaw 233 Pathen 234 Kangyidant 235 Einme 236 Maubin 237 Wakema 238 Kyaiklat 239 Myaungmya 240 Ngapudaw 241 Mawlamyinegyun 242 Dedaye 243 Bogale 244 Labutta 245 Pyapon	Bago West Division 246 Paukkaung 247 Pyay 248 Padaung 249 Paungde 250 Thegon 251 Shwedaung 252 Nattalin 253 Zigon 254 Gyobingauk 255 Okpho 256 Monyo 257 Minhla 258 Letpadan 259 Thayarwady Magway Division 260 Gangaw 261 Tilin 262 Myaing 263 Yesogyo 264 Pauk 265 Pakokku 266 Saw 267 Seikphyu 268 Chauk 269 Salin 270 Sidoktaya 271 Natmauk 272 Yanangyau 273 Pwinbyu 274 Myothit 275 Minbu 276 Magway 277 Ngape 278 Taungdwingyi 279 Minhla 280 Sinbaungwe 281 Thayet 282 Mindon 283 Aungmye 284 Kamma Mandalay Division 285 Mongyai 286 Mogoke 287 Singu 288 Madaya 289 Patheingyi 290 Aungmyethazan 291 Chanayethazan 292 Pynoolwin 293 Mahaungmyay 294 Chanmyathazi 295 Pgyigyilagon 296 Amarapura 297 Ngazun 298 Sintgaing 299 Tada-U 300 Kyaukse 301 Myingyan 302 Natogyi 303 Myitha 304 Taungtha 305 Wundwin 306 Mahlaing 307 Nyau-U 308 Kyaukpadaung 309 Meiktila 310 Thazi 311 Pyawbwe 312 Yamethin 313 Nay Pyi Taw-Tatkon 314 Nay Pyi Taw-Pyinnara 315 Nay Pyi Taw-Lewe Mon State 316 Kyaikto 317 Bilin 318 Thaton 319 Paung 320 Mawlamyine 321 Chaungzon 322 Kyaikmaraw 323 Mudon 324 Thantayazay 325 Ye
---	--	--	--



Map ID: MIMU546v01
 Creation Date: 23 September 2010. A4
 Projection/Datum: Geographic/WGS84
 Data Sources : MIMU
 Map produced by the MIMU - info.mimu@undp.org

